

245 Dyke Road, Hove

Hove

Guide Price £1,400,000 - £1,500,000

# 245 Dyke Road

Hove, Hove

Exceptional five bed, four bath semi with period charm and modern luxury. Features open-plan living, landscaped garden, panoramic sea views, home gym, two offices, balconies, and ample parking.

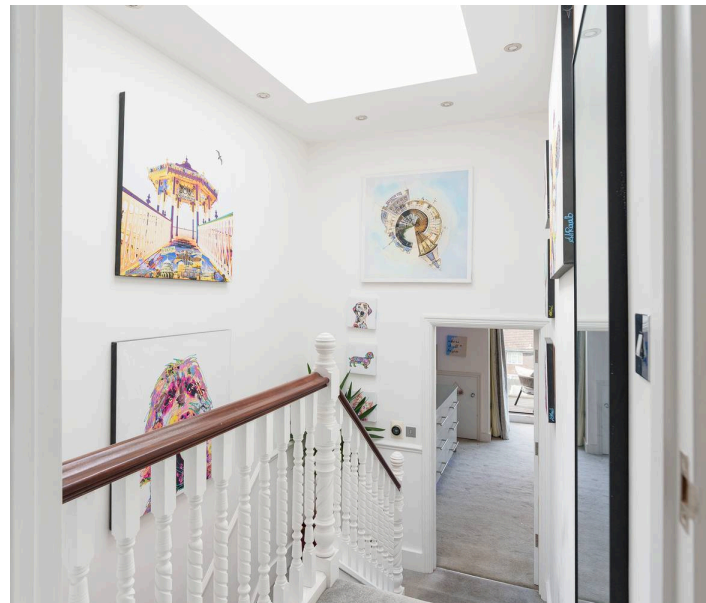
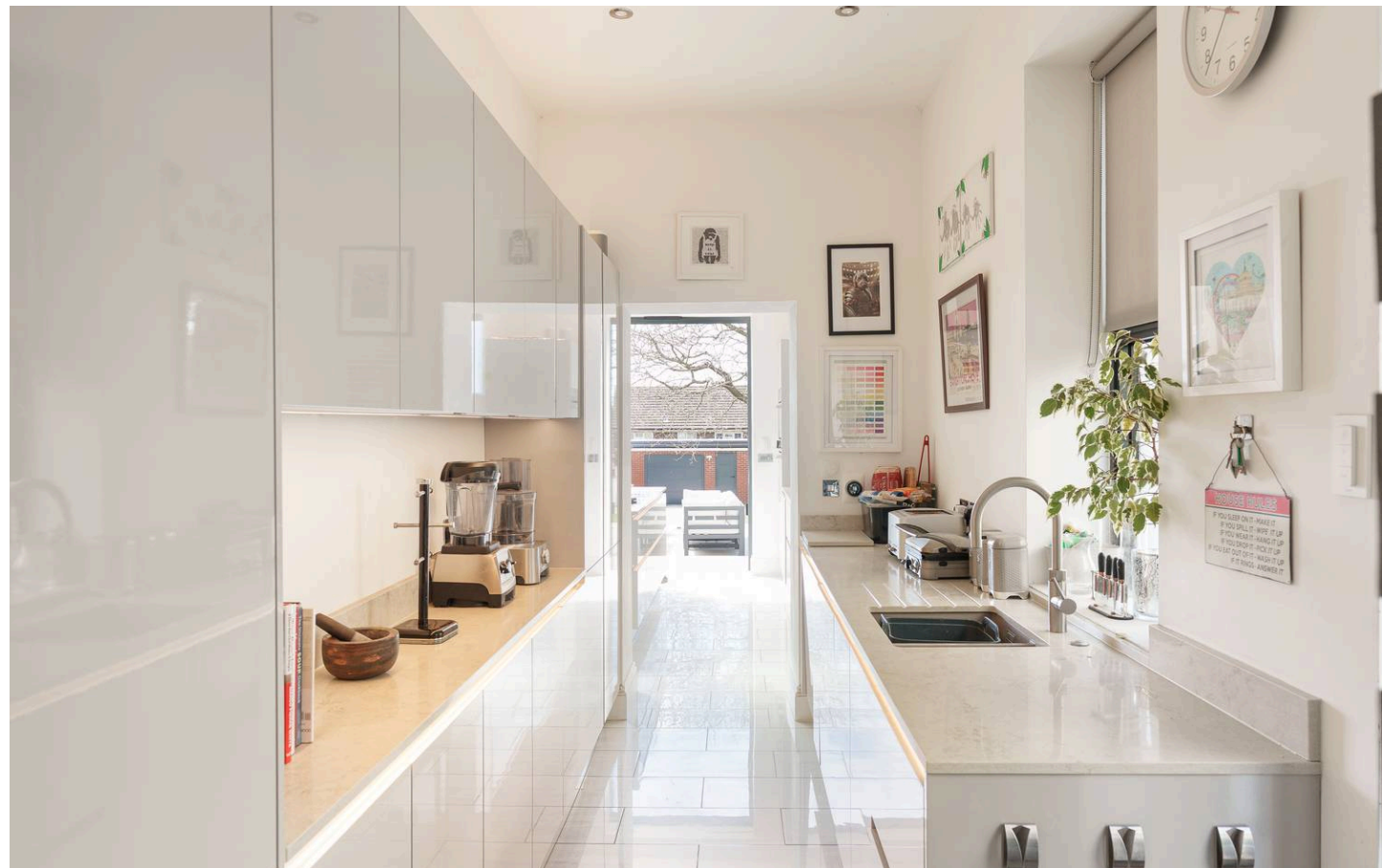
Council Tax band: F

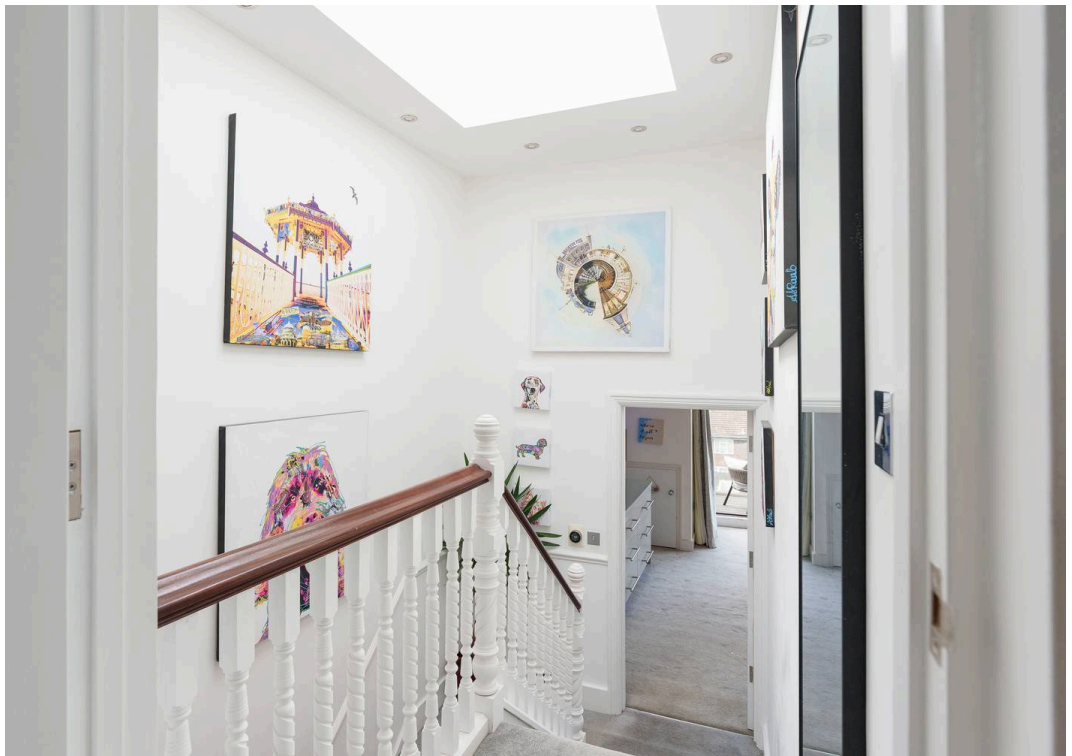
Tenure: Freehold

EPC Energy Efficiency Rating: C

EPC Environmental Impact Rating: C

- Guide price £1,500,000 - £1,600,000
- Modern open plan kitchen and separate living room
- Spacious living area with bi-folds creating seamless indoor-outdoor living
- Private balconies with panoramic sea views and large South facing landscaped garden
- Summer house with store room
- Master suite with ensuite shower room, balcony and dressing room
- Home gym and dedicated office space
- High end luxury finish throughout
- Semi detached family home on desirable Dyke Road



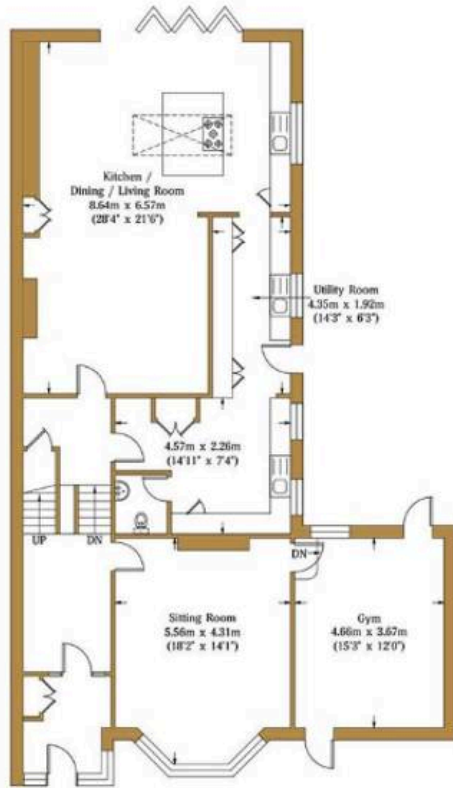


# Dyke Road

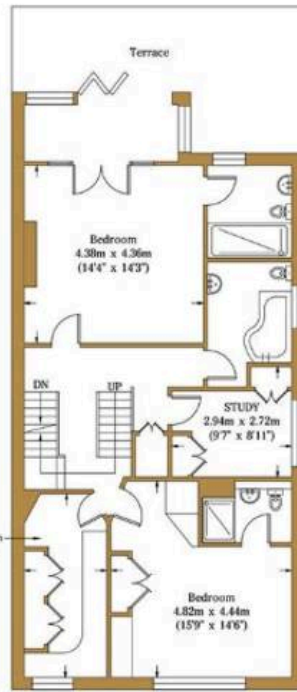
Approx. Gross Internal Area (Excluding Garage / Outbuilding):- 279.8 sq.m. 3011.73 sq.ft.

# HW

ESTATE AGENTS



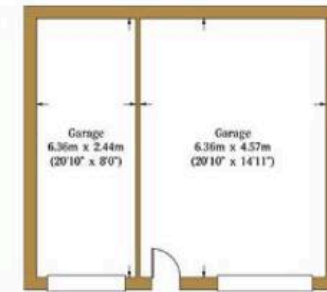
Ground Floor  
Approximate Floor Area  
1425.14 sq ft  
(132.40 sq m)



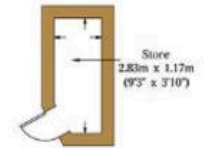
First Floor  
Approximate Floor Area  
950.02 sq ft  
(88.26 sq m)



Second Floor  
Approximate Floor Area  
636.57 sq ft  
(59.14 sq m)



Garage  
Approximate Floor Area  
486.74 sq ft  
(45.22 sq m)



Outbuilding  
Approximate Floor Area  
34.01 sq ft  
(3.16 sq m)

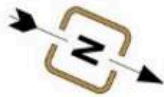
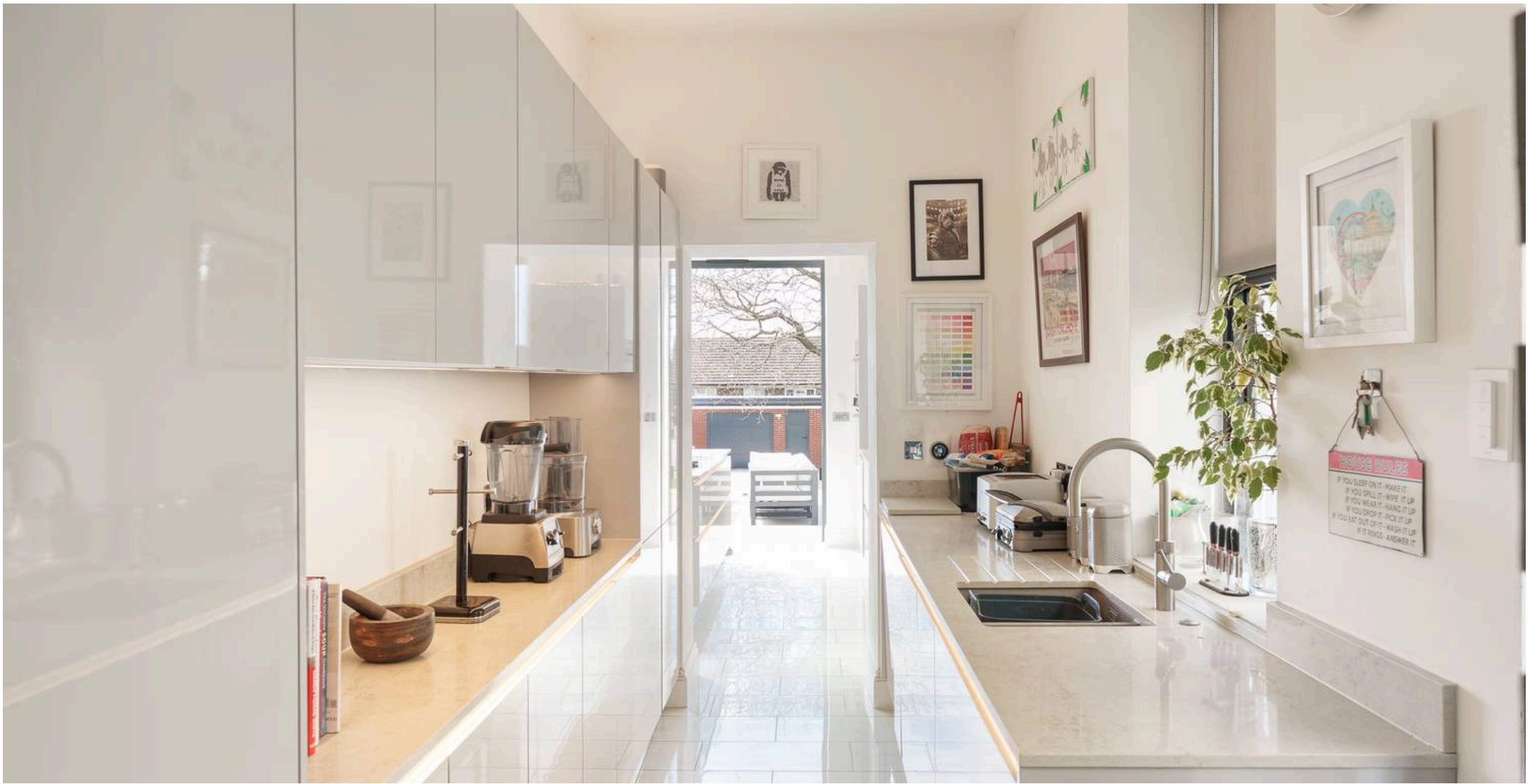


Illustration for identification purposes only, measurements are approximate, not to scale.

© hwestateagents



## Winn Estates

Winn Estates, 201 Church Road, Hove - BN3 2AB

01273 044004

[liam@winn-estates.com](mailto:liam@winn-estates.com)

<http://winn-estates.com>