



Flat 3, 27 Compton Avenue, Brighton

Brighton

£135,000 | £1,000 pcm

Flat 3

27 Compton Avenue, Brighton

Well appointed studio flat in Seven Dials, near Brighton station. Separate kitchen, bright living space, neutral décor, large windows. Ideal for commuters. No chain. Close to local amenities. Council Tax band: A

Tenure: Share of Freehold

EPC Energy Efficiency Rating: D

EPC Environmental Impact Rating: D

- Studio apartment
- Separate kitchen
- Popular Seven Dials location
- Close to Brighton station
- Within West Hill Conservation Area
- Fantastic location for commuters and professionals
- No on going chain





COMPTON AVENUE

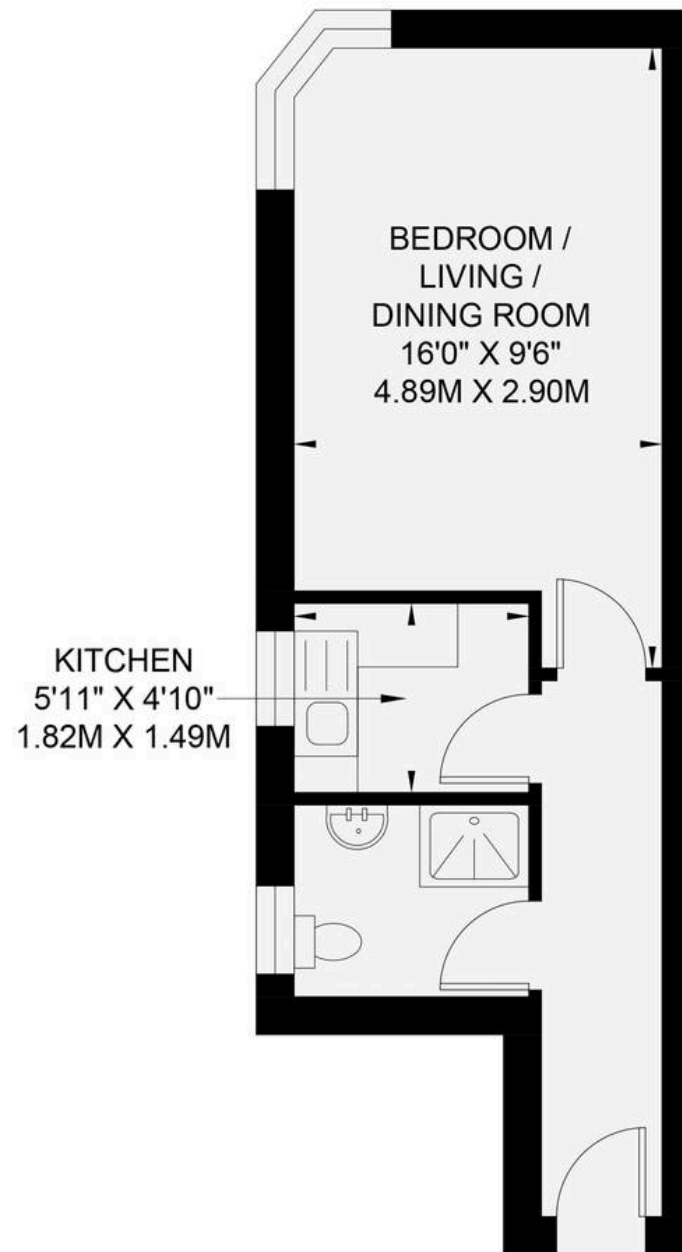
APPROXIMATE GROSS INTERNAL AREA
23.28 sq m / 250.58 sq ft



←	Measuring Points	(CH)	Ceiling Height
S	Storage Cupboard	T	Hot Water Tank
W	Fitted Wardrobes	FF	Integrated Fridge / Freezer
↖	Garden Shortened for Display	□	Head Height Below 1.5m
☐	Skylight	B	Boiler

Floor plan is for illustration and identification purposes only and is not to scale.
Plots, gardens, balconies and terraces are illustrative only and excluded from all area calculations. All site plans are for illustration purposes only and are not to scale.
This floor plan has been produced in accordance with Royal Institution of Chartered Surveyors' International Property Standards 2 (IPMS2).

© For Winn Estates use only. All rights reserved.



Ground Floor Flat
23.28 sq m / 250.58 sq ft



Winn Estates

Winn Estates, 201 Church Road, Hove - BN3 2AB

01273 044004

liam@winn-estates.com

<http://winn-estates.com>