



4 Benett Drive, Hove

Hove

£1,250,000

# 4 Benett Drive

Hove, Hove

Stunning Detached Family Home with spacious living areas, Large Modern Kitchen, Ensuite To Master Bedroom, Rear Garden, Annexe, Off-Street Parking & Garage. Planning Consent To Extend. Council Tax band: E

Tenure: Freehold

EPC Energy Efficiency Rating: C

EPC Environmental Impact Rating: D

- Detached Family Home
- Large Living Room
- Modern Kitchen Breakfast Room
- Separate Office
- Rear Garden With Annexe
- Off Street Parking & Garage
- Planning To Extend



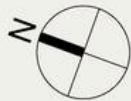


**BENETT DRIVE**

HOVE

APPROXIMATE GROSS INTERNAL AREA  
**209.3 sq m / 2251 sq ft**

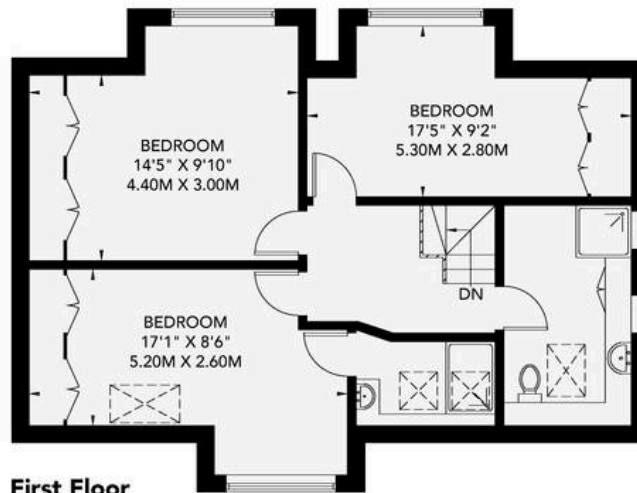
INCLUDING LIMITED USED AREA OF GARAGE  
**12.2 sq m / 131 sq ft**



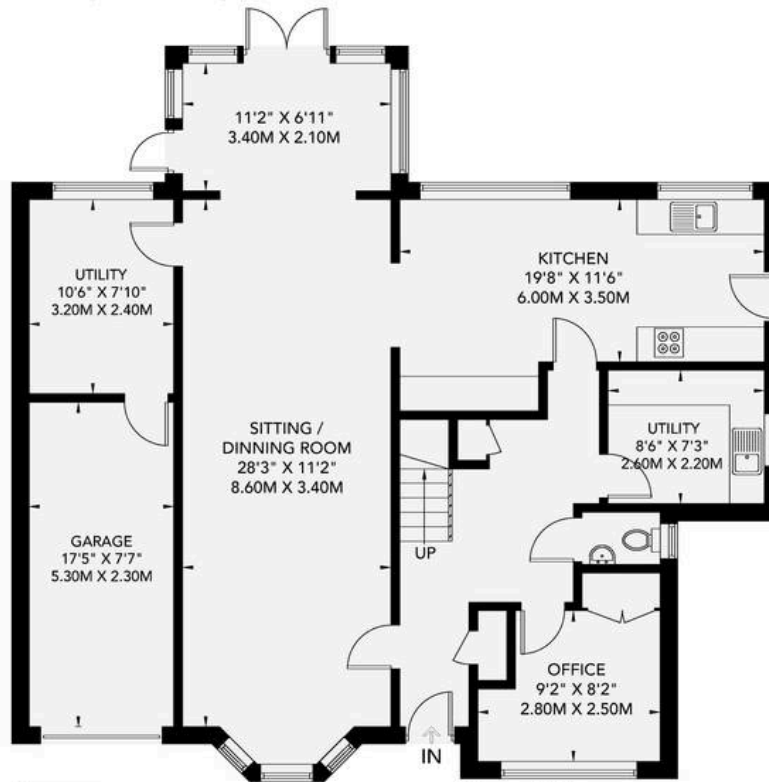
	Measuring Points		Ceiling Height
S	Storage Cupboard	T	Hot Water Tank
W	Fitted Wardrobes	FF	Integrated Fridge / Freezer
	Garden Shortened for Display		Head Height Below 1.5m
	Skylight		Boiler

Floor plan is for illustration and identification purposes only and is not to scale.  
Plots, gardens, balconies and terraces are illustrative only and excluded from all area calculations. All site plans are for illustration purposes only and are not to scale.  
This floor plan has been produced in accordance with Royal Institution of Chartered Surveyors' International Property Standards 2 (IPMS2).

© For Winn Estates use only. All rights reserved.

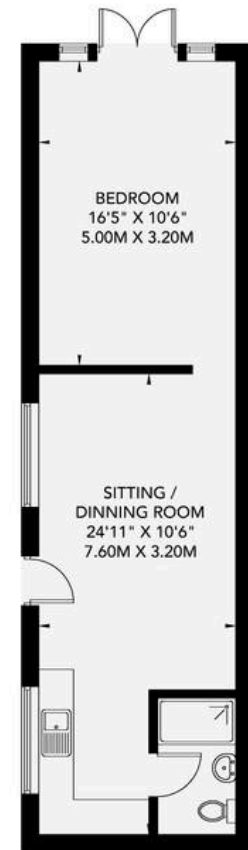


**First Floor**  
**61.5 sq m / 661 sq ft**



**Garage**  
**12.2 sq m / 131 sq ft**

**Ground Floor**  
**95.2 sq m / 1024 sq ft**



**Annexe**  
**40.4 sq m / 434 sq ft**



## Winn Estates

Winn Estates, 201 Church Road, Hove - BN3 2AB

01273 044004

[liam@winn-estates.com](mailto:liam@winn-estates.com)

<http://winn-estates.com>