



27 Beechwood Close, Brighton

Brighton

Offers Over £725,000

# 27 Beechwood Close

Brighton, Brighton

Exceptional 4-bed detached house features spacious living areas, modern kitchen, luxurious bathrooms, private garden, and panoramic views. A perfect family home for any family  
Council Tax band: F

Tenure: Freehold

EPC Energy Efficiency Rating: C

EPC Environmental Impact Rating: D

- Detached family home
- Four spacious bedrooms
- Modern kitchen with integrated appliances
- Contemporary bathrooms with walk-in showers
- Private mature garden
- Spacious driveway
- Large double garage
- Panoramic scenic views





## BEECHWOOD CLOSE

BRIGHTON

APPROXIMATE GROSS INTERNAL AREA  
**160.8 sq m / 1730 sq ft**

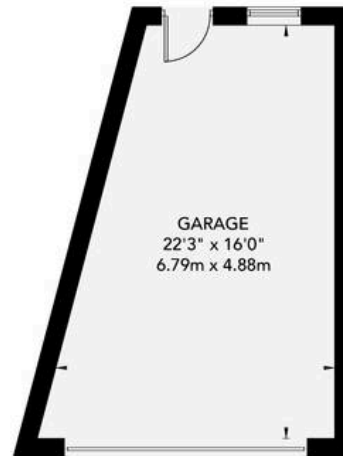
INCLUDING LIMITED USED AREA OF GARAGE  
**26.3 sq m / 283 sq ft**



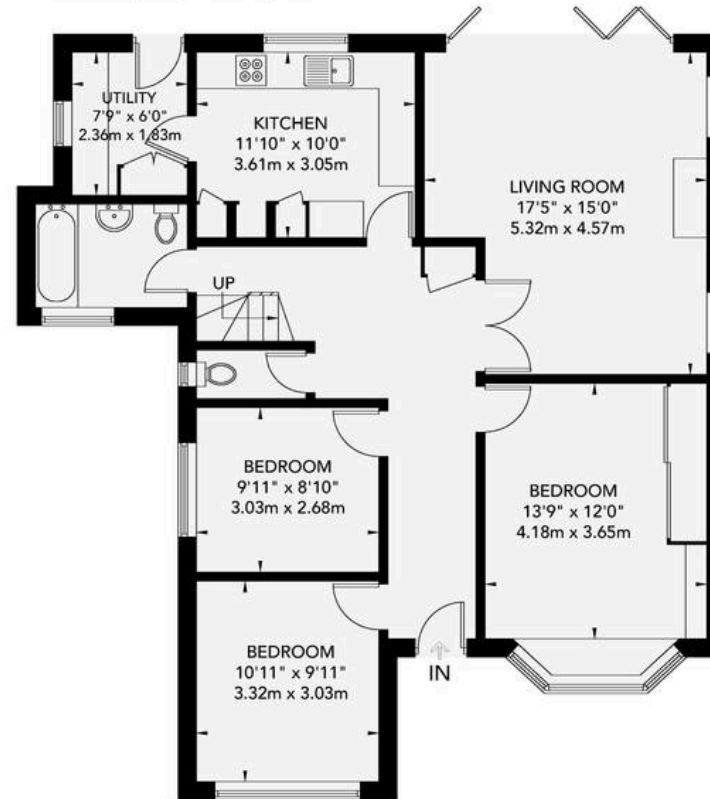
	Measuring Points		Ceiling Height
S	Storage Cupboard	T	Hot Water Tank
W	Fitted Wardrobes	FF	Integrated Fridge / Freezer
	Garden Shortened for Display		Head Height Below 1.5m
	Skylight	B	Boiler

Floor plan is for illustration and identification purposes only and is not to scale.  
Plots, gardens, balconies and terraces are illustrative only and excluded from all area calculations. All site plans are for illustration purposes only and are not to scale.  
This floor plan has been produced in accordance with Royal Institution of Chartered Surveyors' International Property Standards 2 (IPMS2).

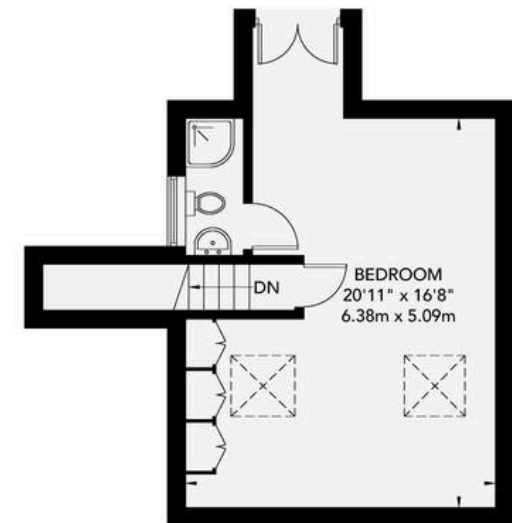
© For Winn Estates use only. All rights reserved.



**Garage**  
**26.3 sq m / 283 sq ft**



**Ground Floor**  
**96.2 sq m / 1035 sq ft**



**First Floor**  
**38.3 sq m / 412 sq ft**



## Winn Estates

Winn Estates, 201 Church Road, Hove - BN3 2AB

01273 044004

[liam@winn-estates.com](mailto:liam@winn-estates.com)

<http://winn-estates.com>